



PRELIMINARY

**NEC** NEC LCD Technologies, Ltd.

## TFT COLOR LCD MODULE

**NL10276BC30-34R**

**38cm (15.0 Type)**

**XGA**

**LVDS interface (1port)**

## PRELIMINARY DATA SHEET

**DOD-PP-1202 (1st edition)**

**All information is subject to change without notice.  
Please confirm the sales representative before  
starting to design your system.**

# PRELIMINARY

**NEC** NEC LCD Technologies, Ltd.**NL10276BC30-34R**

## INTRODUCTION

The Copyright to this document belongs to NEC LCD Technologies, Ltd. (hereinafter called "NEC"). No part of this document will be used, reproduced or copied without prior written consent of NEC.

NEC does and will not assume any liability for infringement of patents, copyrights or other intellectual property rights of any third party arising out of or in connection with application of the products described herein except for that directly attributable to mechanisms and workmanship thereof. No license, express or implied, is granted under any patent, copyright or other intellectual property right of NEC.

Some electronic parts/components would fail or malfunction at a certain rate. In spite of every effort to enhance reliability of products by NEC, the possibility of failures and malfunction might not be avoided entirely. To prevent the risks of damage to death, human bodily injury or other property arising out thereof or in connection therewith, each customer is required to take sufficient measures in its safety designs and plans including, but not limited to, redundant system, fire-containment and anti-failure.

The products are classified into three quality grades: "**Standard**", "**Special**", and "**Specific**" of the highest grade of a quality assurance program at the choice of a customer. Each quality grade is designed for applications described below. Any customer who intends to use a product for application other than that of Standard quality grade is required to contact an NEC sales representative in advance.

The **Standard** quality grade applies to the products developed, designed and manufactured in accordance with the NEC standard quality assurance program, which are designed for such application as any failure or malfunction of the products (sets) or parts/components incorporated therein a customer uses are, directly or indirectly, free of any damage to death, human bodily injury or other property, like general electronic devices.

Examples: Computers, office automation equipment, communications equipment, test and measurement equipment, audio and visual equipment, home electronic appliances, machine tools, personal electronic equipment, industrial robots, etc.

The **Special** quality grade applies to the products developed, designed and manufactured in accordance with an NEC quality assurance program stricter than the standard one, which are designed for such application as any failure or malfunction of the products (sets) or parts/components incorporated therein a customer uses might directly cause any damage to death, human bodily injury or other property, or such application under more severe condition than that defined in the Standard quality grade without such direct damage.

Examples: Control systems for transportation equipment (automobiles, trains, ships, etc.), traffic control systems, anti-disaster systems, anti-crime systems, medical equipment not specifically designed for life support, safety equipment, etc.

The **Specific** quality grade applies to the products developed, designed and manufactured in accordance with the standards or quality assurance program designated by a customer who requires an extremely higher level of reliability and quality for such products.

Examples: Military systems, aircraft control equipment, aerospace equipment, nuclear reactor control systems, medical equipment/devices/systems for life support, etc.

The quality grade of this product is the "**Standard**" unless otherwise specified in this document.



# PRELIMINARY

**NEC** NEC LCD Technologies, Ltd.**NL10276BC30-34R**

## CONTENTS

|  |    |
|--|----|
| <b>INTRODUCTION</b> .....  | 2  |
| <b>1. OUTLINE</b> .....  | 4  |
| 1.1 STRUCTURE AND PRINCIPLE .....                                | 4  |
| 1.2 APPLICATION .....  | 4  |
| 1.3 FEATURES .....   | 4  |
| <b>2. GENERAL SPECIFICATIONS</b> .....                           | 5  |
| <b>3. BLOCK DIAGRAM</b> .....                                    | 6  |
| <b>4. DETAILED SPECIFICATIONS</b> .....                          | 8  |
| 4.1 MECHANICAL SPECIFICATIONS .....                              | 8  |
| 4.2 ABSOLUTE MAXIMUM RATINGS .....                               | 8  |
| 4.3 ELECTRICAL CHARACTERISTICS .....                             | 9  |
| 4.3.1 LCD panel signal processing board .....                    | 9  |
| 4.3.2 Backlight lamp .....                                       | 10 |
| 4.3.3 Power supply voltage ripple .....                          | 10 |
| 4.3.4 Fuse .....   | 10 |
| 4.4 POWER SUPPLY VOLTAGE SEQUENCE .....                          | 11 |
| 4.4.1 LCD panel signal processing board .....                    | 11 |
| 4.4.2 LED driver board .....                                     | 11 |
| 4.5 CONNECTIONS AND FUNCTIONS FOR INTERFACE PINS .....           | 12 |
| 4.5.1 LCD panel signal processing board .....                    | 12 |
| 4.5.2 Backlight lamp .....                                       | 13 |
| 4.5.3 Positions of plug and socket .....                         | 13 |
| 4.5.4 Connection between receiver and transmitter for LVDS ..... | 14 |
| 4.6 DISPLAY COLORS AND INPUT DATA SIGNALS .....                  | 15 |
| 4.7 DISPLAY POSITIONS .....                                      | 16 |
| 4.8 SCANNING DIRECTIONS .....                                    | 16 |
| 4.9 INPUT SIGNAL TIMINGS .....                                   | 17 |
| 4.9.1 Outline of input signal timings .....                      | 17 |
| 4.9.2 Timing characteristics .....                               | 18 |
| 4.9.3 Input signal timing chart .....                            | 19 |
| 4.10 OPTICS .....  | 20 |
| 4.10.1 Optical characteristics .....                             | 20 |
| 4.10.2 Definition of contrast ratio .....                        | 21 |
| 4.10.3 Definition of luminance uniformity .....                  | 21 |
| 4.10.4 Definition of response times .....                        | 21 |
| 4.10.5 Definition of viewing angles .....                        | 21 |
| <b>5. ESTIMATED LUMINANCE LIFETIME</b> .....                     | 22 |
| <b>6. RELIABILITY TESTS</b> .....                                | 23 |
| <b>7. PRECAUTIONS</b> .....                                      | 24 |
| 7.1 MEANING OF CAUTION SIGNS .....                               | 24 |
| 7.2 CAUTIONS .....   | 24 |
| 7.3 ATTENTIONS .....   | 24 |
| 7.3.1 Handling of the product .....                              | 24 |
| 7.3.2 Environment .....  | 25 |
| 7.3.3 Characteristics .....                                      | 25 |
| 7.3.4 Others .....   | 25 |
| <b>8. OUTLINE DRAWINGS</b> .....                                 | 26 |
| 8.1 FRONT VIEW .....   | 26 |
| 8.2 REAR VIEW .....  | 27 |
| <b>REVISION HISTORY</b> .....                                    | 28 |

# PRELIMINARY

**NEC** NEC LCD Technologies, Ltd.

**NL10276BC30-34R**

## 1. OUTLINE

### 1.1 STRUCTURE AND PRINCIPLE

Color LCD module NL10276BC30-34R is composed of the amorphous silicon thin film transistor liquid crystal display (a-Si TFT LCD) panel structure with driver LSIs for driving the TFT (Thin Film Transistor) array and a backlight.

The a-Si TFT LCD panel structure is injected liquid crystal material into a narrow gap between the TFT array glass substrate and a color-filter glass substrate.

Color (Red, Green, Blue) data signals from a host system (e.g. signal generator, etc.) are modulated into best form for active matrix system by a signal processing board, and sent to the driver LSIs which drive the individual TFT arrays.

The TFT array as an electro-optical switch regulates the amount of transmitted light from the backlight assembly, when it is controlled by data signals. Color images are created by regulating the amount of transmitted light through the TFT array of red, green and blue dots.

### 1.2 APPLICATION

- For industrial use

### 1.3 FEATURES

- Long life LED backlight type
- High luminance
- High contrast
- Wide viewing angle
- Fast response time
- LVDS interface
- Reversible-scan direction
- Small foot print
- Replaceable lamp for backlight
- Acquisition product for UL60950-1/CSA C22.2 No.60950-1-03 (File number: E170632)



## PRELIMINARY

NEC NEC LCD Technologies, Ltd.

NL10276BC30-34R

## 2. GENERAL SPECIFICATIONS

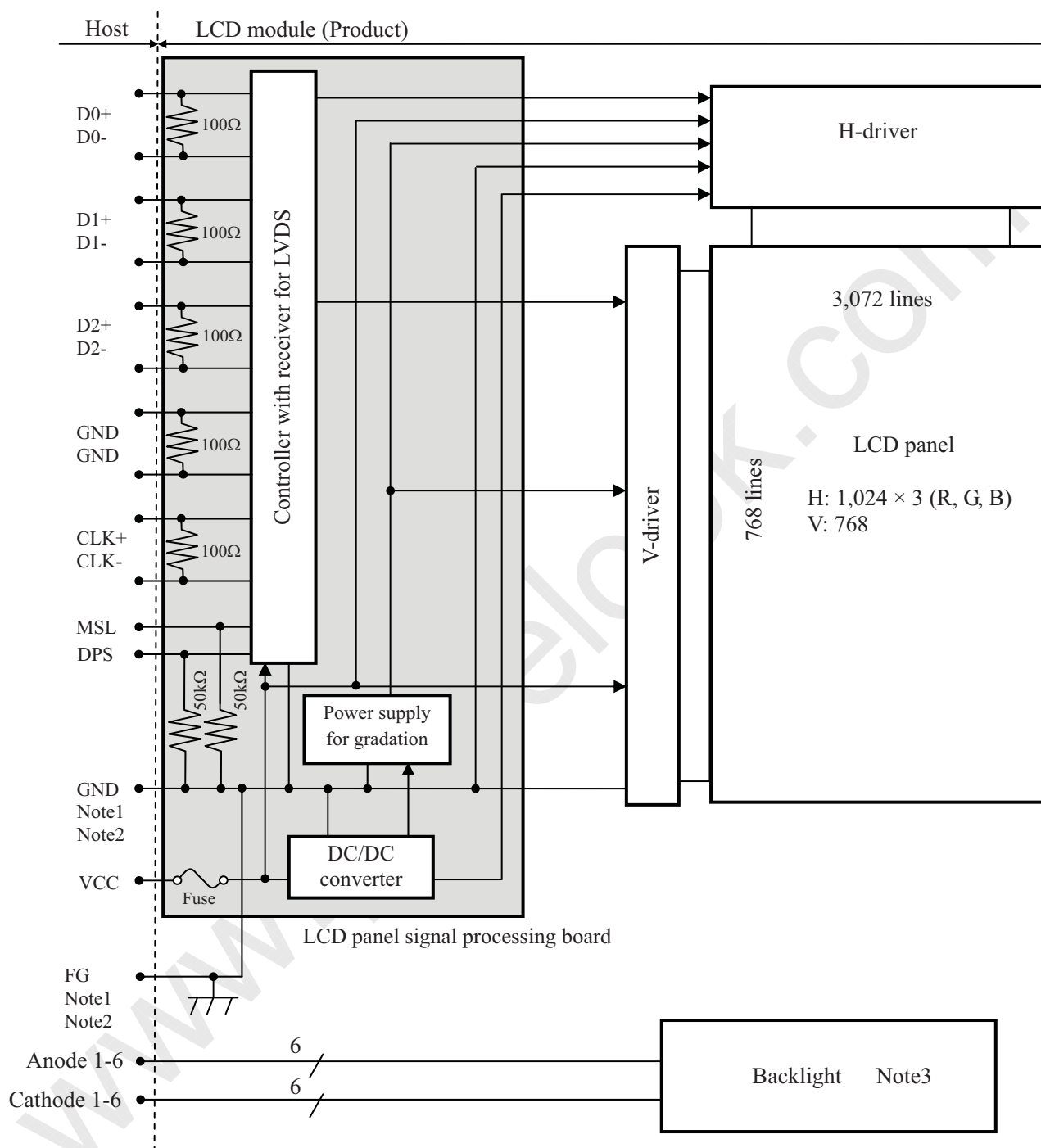
|                                   |  |
|-----------------------------------|--|
| <b>Display area</b>               | 304.128 (H) × 228.096 (V) mm   |
| <b>Diagonal size of display</b>   | 38cm (15.0 inches)   |
| <b>Drive system</b>               | a-Si TFT active matrix   |
| <b>Display color</b>              | 262,144 colors (6bit)  |
| <b>Pixel</b>                      | 1,024 (H) × 768 (V) pixels   |
| <b>Pixel arrangement</b>          | RGB (Red dot, Green dot, Blue dot) vertical stripe   |
| <b>Dot pitch</b>                  | 0.099 (H) × 0.297 (V) mm   |
| <b>Pixel pitch</b>                | 0.297 (H) × 0.297 (V) mm   |
| <b>Module size</b>                | 326.5 (W) × 253.5 (H) × 11.5 (D) mm (typ.)   |
| <b>Weight</b>                     | 970g (typ.)  |
| <b>Contrast ratio</b>             | 600:1 (typ.)   |
| <b>Viewing angle</b>              | At the contrast ratio ≥ 10:1 <ul style="list-style-type: none"><li>• Horizontal: Right side 80° (typ.), Left side 80° (typ.)</li><li>• Vertical: Up side 80° (typ.), Down side 80° (typ.)</li></ul>  |
| <b>Designed viewing direction</b> | At DPS terminal= Low or Open: Normal scan <ul style="list-style-type: none"><li>• Viewing direction without image reversal: Up side (12 o'clock)</li><li>• Viewing direction with contrast peak: Down side (6 o'clock)</li><li>• Viewing angle with optimum grayscale (<math>\gamma \approx 2.2</math>): Normal axis (perpendicular)</li></ul>   |
| <b>Polarizer surface</b>          | Antiglare  |
| <b>Polarizer pencil-hardness</b>  | 3H (min.) [by JIS K5600]   |
| <b>Color gamut</b>                | At LCD panel center<br>50% (typ.) [against NTSC color space]   |
| <b>Response time</b>              | $T_{on} + T_{off}$ (10% ← → 90%)<br>18ms (typ.)  |
| <b>Luminance</b>                  | At $I_L = 50mA$ / One circuit<br>400cd/m <sup>2</sup> (typ.)   |
| <b>Signal system</b>              | LVDS 1port<br>(Receiver: Equivalent of THC63LVDF84B, THine Electronics Inc.)<br>[6-bit digital signals for data of RGB colors, Dot clock (CLK), Data enable (DE)]  |
| <b>Power supply voltage</b>       | LCD panel signal processing board: 3.3V  |
| <b>Backlight</b>                  | LED Backlight type:<br><div style="display: flex; align-items: center;"><div style="margin-right: 10px;">[</div><div>Replaceable part<ul style="list-style-type: none"><li>• Lamp holder set: Type No.:150LHS36</li></ul></div><div style="margin-left: 10px;">]</div></div> <div style="display: flex; align-items: center; margin-top: 10px;"><div style="margin-right: 10px;">[</div><div>Recommended LED driver board (Option)<ul style="list-style-type: none"><li>• LED driver board: Type No.:150PW02F</li><li>• Corresponding wiring harness: Type No. 150CBL02</li></ul></div><div style="margin-left: 10px;">]</div></div> |
| <b>Power consumption</b>          | At $I_L = 50mA$ / One circuit, Checkered flag pattern<br>9.8W (typ.)   |

## PRELIMINARY

NEC NEC LCD Technologies, Ltd.

NL10276BC30-34R

## 3. BLOCK DIAGRAM



Note1: Relations between GND (Signal ground) and FG (Frame ground) in the LCD module are as follows.

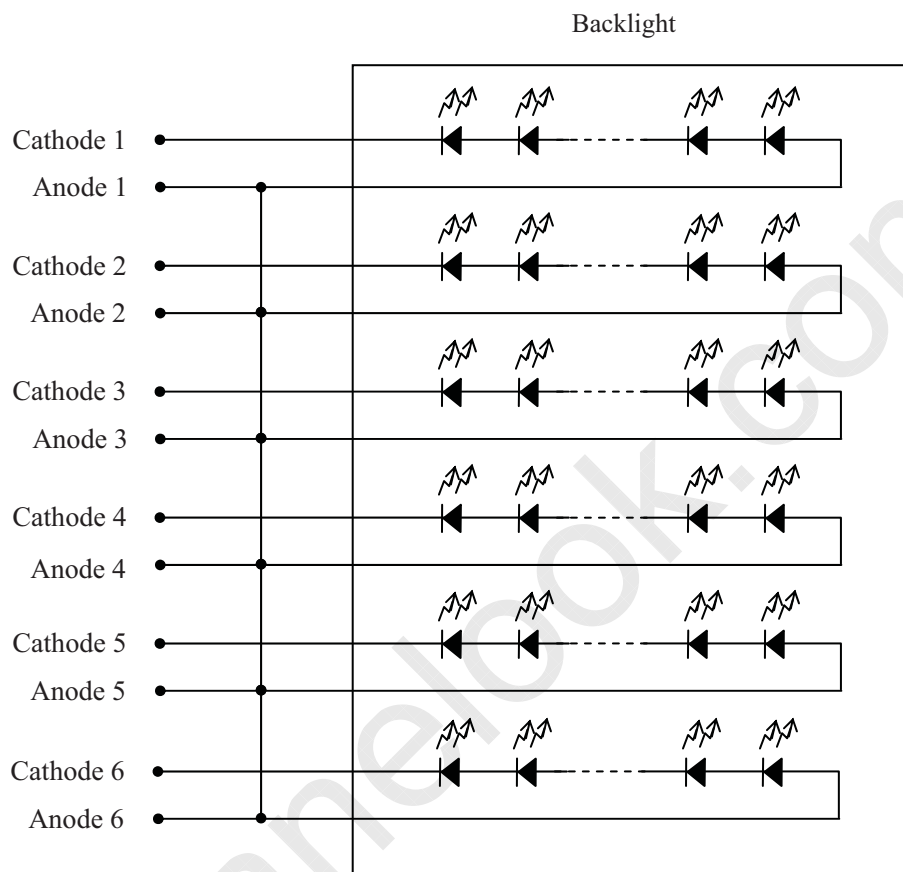
|        |           |
|--------|-----------|
| GND-FG | Connected |
|--------|-----------|

Note2: GND and FG must be connected to customer equipment's ground, and it is recommended that these grounds be connected together in customer equipment.

## PRELIMINARY

**NEC** NEC LCD Technologies, Ltd.**NL10276BC30-34R**

Note3: Detail of backlight



## PRELIMINARY

NEC NEC LCD Technologies, Ltd.

NL10276BC30-34R

## 4. DETAILED SPECIFICATIONS

## 4.1 MECHANICAL SPECIFICATIONS

| Parameter    | Specification   | Unit |
|--------------|---|------|
| Module size  | $326.5 \pm 0.5$ (W) $\times$ $253.5 \pm 0.5$ (H) $\times$ $11.5 \pm 0.5$ max. (D) Note1 | mm   |
| Display area | $304.128$ (H) $\times$ $228.096$ (V) Note1  | mm   |
| Weight       | 970(typ.), 1,050 (max.)   | g    |

Note1: See "8. OUTLINE DRAWINGS".

## 4.2 ABSOLUTE MAXIMUM RATINGS

| Parameter                  |                                   | Symbol        | Rating          | Unit       | Remarks         |       |
|----------------------------|-----------------------------------|---------------|-----------------|------------|-----------------|-------|
| Power supply voltage       | LCD panel signal processing board | VCC           | -0.3 to +4.0    | V          | -               |       |
| Input voltage for signals  | Display signals<br>Note1          | VD            | -0.3 to VCC+0.3 | V          |                 |       |
|                            | Function signals<br>Note2         | VF            |                 |            |                 |       |
| Backlight                  | Forward current                   | IL            | 60              | mA         | per one circuit |       |
| Storage temperature        |                                   | Tst           | -20 to +80      | °C         | -               |       |
| Operating temperature      |                                   | Front surface | TopF            | -20 to +70 | °C              | Note3 |
|                            |                                   | Rear surface  | TopR            | -20 to +70 | °C              | Note4 |
| Relative humidity<br>Note5 |                                   | RH            | ≤ 95            | %          | Ta ≤ 40°C       |       |
|                            |                                   |               | ≤ 85            | %          | 40 < Ta ≤ 50°C  |       |
|                            |                                   |               | ≤ 55            | %          | 50 < Ta ≤ 60°C  |       |
|                            |                                   |               | ≤ 36            | %          | 60 < Ta ≤ 70°C  |       |
| Absolute humidity<br>Note5 |                                   | AH            | ≤ 70<br>Note6   | g/m³       | Ta > 70°C       |       |

Note1: D0+/-, D1+/-, D2+/-, CLK+/-

Note2: MSL, DPS

Note3: Measured at center of LCD panel surface (including self-heat)

Note4: Measured at center of LCD module's rear shield surface (including self-heat)

Note5: No condensation

Note6: Water amount at  $T_a = 70^\circ\text{C}$  and  $\text{RH} = 36\%$



## PRELIMINARY

NEC NEC LCD Technologies, Ltd.

NL10276BC30-34R

## 4.3 ELECTRICAL CHARACTERISTICS

## 4.3.1 LCD panel signal processing board

(Ta= 25°C)

| Parameter                             |      | Symbol | min. | typ.         | max.         | Unit  | Remarks               |
|---------------------------------------|------|--------|------|--------------|--------------|-------|-----------------------|
| Power supply voltage                  |      | VCC    | 3.0  | 3.3          | 3.6          | V     | -                     |
| Power supply current                  |      | ICC    | -    | 500<br>Note1 | 700<br>Note2 | mA    | at VCC= 3.3V          |
| Permissible ripple voltage            |      | VRP    | -    | -            | 100          | mVp-p | for VCC               |
| Differential input threshold voltage  | High | VTH    | -    | -            | +100         | mV    | at VCM= 1.2V<br>Note3 |
|                                       | Low  | VTL    | -100 | -            | -            | mV    |                       |
| Input voltage swing                   |      | Vi     | 0    | -            | 2.4          | V     | -                     |
| Terminating resistance                |      | RT     | -    | 100          | -            | Ω     | -                     |
| Input voltage for MSL and DPS signals | High | VFH    | 2.0  | -            | VCC          | V     | -                     |
|                                       | Low  | VFL    | 0    | -            | 0.8          | V     |                       |
| Input current for MSL and DPS signals | High | IFH    | -    | -            | 300          | μA    | -                     |
|                                       | Low  | IFL    | -300 | -            | -            | μA    |                       |

Note1: Checkered flag pattern [by EIAJ ED-2522]

Note2: Pattern for maximum current

Note3: Common mode voltage for LVDS receiver

## PRELIMINARY

NEC NEC LCD Technologies, Ltd.

NL10276BC30-34R

## 4.3.2 Backlight lamp

(Ta= 25°C, Note1, Note2)

| Parameter       | Symbol | min.  | typ. | max.  | Unit | Remarks                                |
|-----------------|--------|-------|------|-------|------|--|
| Forward Current | IL     | -     | 50   | 55    | mA   | -                                      |
| Forward Voltage | VL     | 23.9  | 27.0 | 30.6  | V    | Ta= +25°C<br>at IL= 50 mA/ One circuit |
|                 |        | 21.42 | -    | -     | V    | Ta= +70°C<br>at IL= 50 mA/ One circuit |
|                 |        | -     | -    | 32.94 | V    | Ta= -20°C<br>at IL= 50 mA/ One circuit |
|                 |        | -     | -    | 33.21 | V    | Ta= -20°C<br>at IL= 55 mA/ One circuit |

Note1: Please drive with constant current.

Note2: The Luminance uniformity may be changed depending on the current variation between 6 circuits.  
It is recommended that the current value difference among the circuits be less than 5%.

## 4.3.3 Power supply voltage ripple

This product works if the ripple voltage levels are over the permissible values as the following table, but there might be noise on the display image.

| Power supply voltage |      | Ripple voltage<br>(Measure at input terminal of power supply) | Note1 | Unit  |
|----------------------|------|---|-------|-------|
| VCC                  | 3.3V | ≤ 100   |       | mVp-p |

Note1: The permissible ripple voltage includes spike noise.

## 4.3.4 Fuse

| Parameter | Fuse       |                          | Rating | Fusing current | Remarks |
|-----------|------------|--------------------------|--------|----------------|---------|
|           | Type       | Supplier                 |        |                |         |
| VCC       | FCC16202AB | KAMAYA ELECTRIC Co., Ltd | 2.0A   | 4.0A           | Note1   |
|           |            |                          | 36V    |                |         |

Note1: The power supply's rated current must be more than the fusing current. If it is less than the fusing current, the fuse may not blow in a short time, and then nasty smell, smoke and so on may occur.

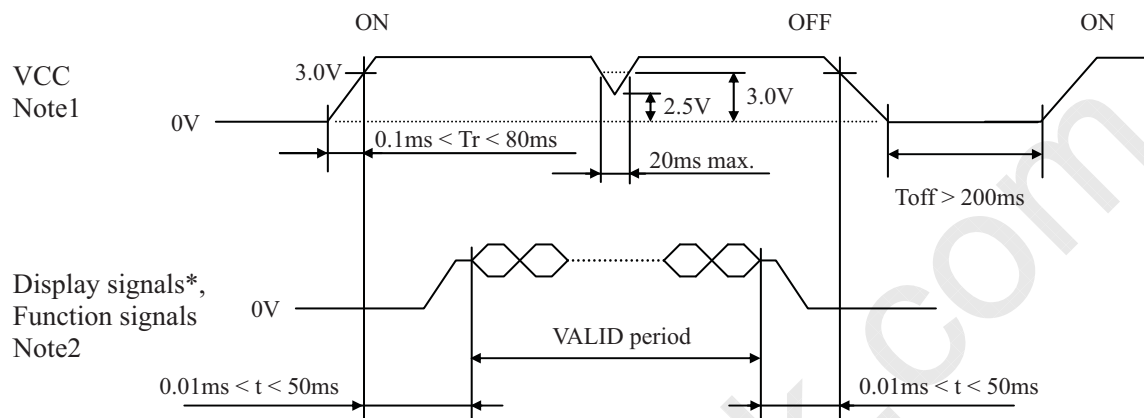
## PRELIMINARY

NEC NEC LCD Technologies, Ltd.

NL10276BC30-34R

## 4.4 POWER SUPPLY VOLTAGE SEQUENCE

## 4.4.1 LCD panel signal processing board



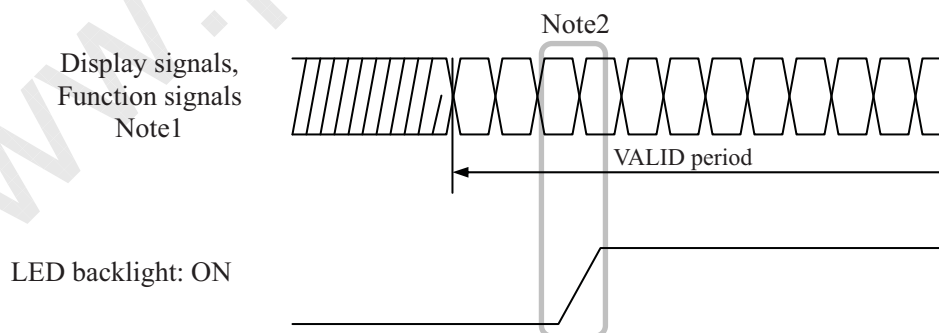
\* These signals should be measured at the terminal of 100Ω resistance.

Note1: If there is a voltage variation (voltage drop) at the rising edge of VCC below 3.0V, there is a possibility that a product does not work due to a protection circuit.

Note2: Display signals (D0+/-, D1+/-, D2+/-, CLK+/-) and function signals (MSL, DPS) must be set to Low or High impedance, except the VALID period (See above sequence diagram), in order to avoid the circuitry damage.

If some of display and function signals of this product are cut while this product is working, even if the signal input to it once again, it might not work normally. If a customer stops the display and function signals, VCC also must be shut down.

## 4.4.2 LED driver board



Note1: These are the display and function signals for LCD panel signal processing board.

Note2: The backlight should be turned on within the valid period of display and function signals, in order to avoid unstable data display.

## PRELIMINARY

NEC NEC LCD Technologies, Ltd.

NL10276BC30-34R

## 4.5 CONNECTIONS AND FUNCTIONS FOR INTERFACE PINS

## 4.5.1 LCD panel signal processing board

CN1 socket (LCD module side): DF14H-20P-1.25H (Hirose Electric Co., Ltd. (HRS))

Adaptable plug: DF14-20S-1.25C (Hirose Electric Co., Ltd. (HRS))

| Pin No. | Symbol | Signal                      | Remarks  |
|---------|--------|-----------------------------|--|
| 1       | VCC    | Power supply                | Note1  |
| 2       | VCC    |                             |  |
| 3       | GND    | Ground                      | Note1  |
| 4       | GND    |                             |  |
| 5       | D0-    | Pixel data                  | Note2  |
| 6       | D0+    |                             |  |
| 7       | GND    | Ground                      | Note1  |
| 8       | D1-    | Pixel data                  | Note2  |
| 9       | D1+    |                             |  |
| 10      | GND    | Ground                      | Note1  |
| 11      | D2-    | Pixel data                  | Note2  |
| 12      | D2+    |                             |  |
| 13      | GND    | Ground                      | Note1  |
| 14      | CLK-   | Pixel clock                 | Note2  |
| 15      | CLK+   |                             |  |
| 16      | GND    | Ground                      | Note1  |
| 17      | GND    |                             |  |
| 18      | GND    |                             |  |
| 19      | DPS    | Selection of scan direction | High: Reverse scan<br>Low or Open: Normal scan<br>Note3, Note5 |
| 20      | MSL    | Selection of LVDS input map | High: Input map<br>Note4, Note5                                |

Note1: All GND and VCC terminals should be used without any non-connected lines.

Note2: Twist pair wires with 100Ω (Characteristic impedance) should be used between LCD panel signal processing board and LVDS transmitter.

Note3: See "4.8 SCANNING DIRECTIONS".

Note4: See "4.5.4 Connection between receiver and transmitter for LVDS".

Note5: This terminal is pulled-down in the product. (Pull-down resistance: 50kΩ)

## PRELIMINARY

**NEC** NEC LCD Technologies, Ltd.**NL10276BC30-34R**

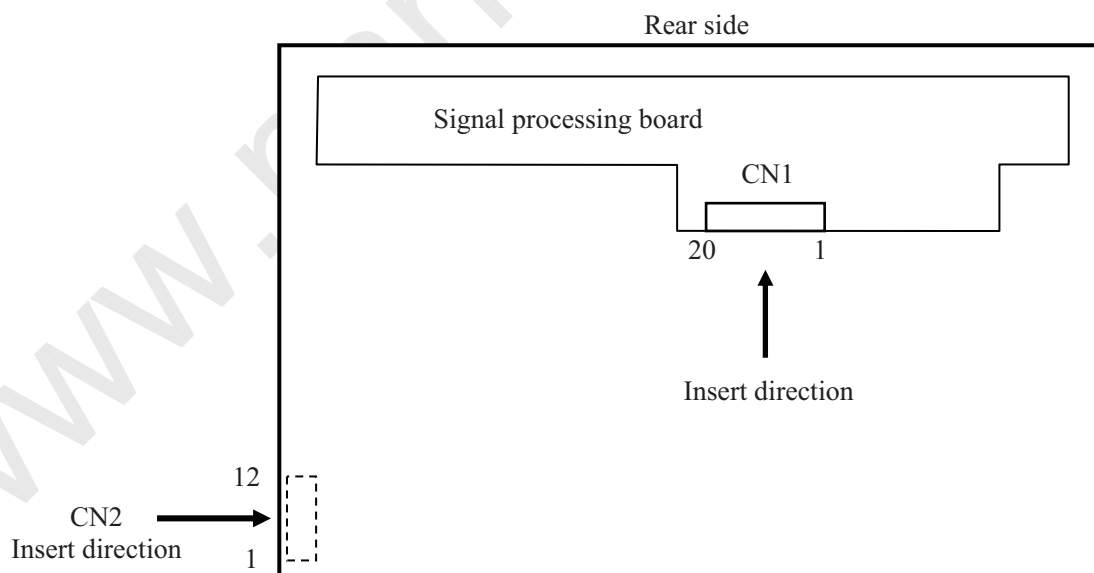
## 4.5.2 Backlight lamp

CN2 plug (LCD module side): SM12B-SRSS-TB (J.S.T. Mfg. Co., Ltd.)

Adaptable socket: SHR-12V-S (J.S.T. Mfg. Co., Ltd.)

| Pin No. | Symbol | Signal   | Remarks |
|---------|--------|----------|---------|
| 1       | A1     | Anode1   | -       |
| 2       | K1     | Cathode1 | -       |
| 3       | A2     | Anode2   | -       |
| 4       | K2     | Cathode2 | -       |
| 5       | A3     | Anode3   | -       |
| 6       | K3     | Cathode3 | -       |
| 7       | A4     | Anode4   | -       |
| 8       | K4     | Cathode4 | -       |
| 9       | A5     | Anode5   | -       |
| 10      | K5     | Cathode5 | -       |
| 11      | A6     | Anode6   | -       |
| 12      | K6     | Cathode6 | -       |

## 4.5.3 Positions of plug and socket



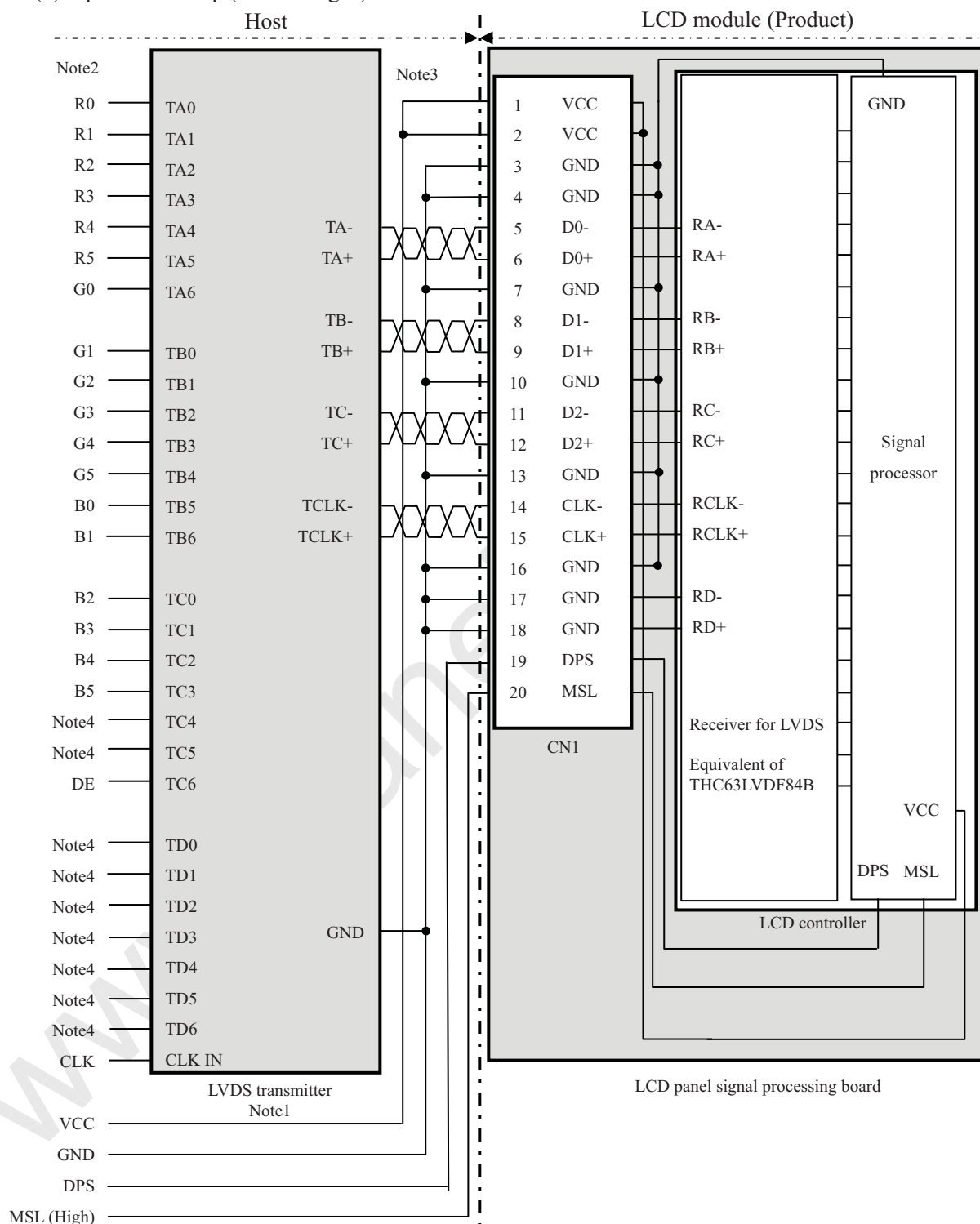
## PRELIMINARY

NEC LCD Technologies, Ltd.

NL10276BC30-34R

## 4.5.4 Connection between receiver and transmitter for LVDS

## (1) Input LVDS map (MSL: "High")



Note1: Recommended transmitter: THC63LVDM83R (Thine Electronics Inc.) or equivalent

Note2: LSB (Least Significant Bit) – R0, G0, B0 MSB (Most Significant Bit) – R5, G5, B5

Note3: Twist pair wires with 100Ω (Characteristic impedance) should be used between LCD panel signal processing board and LVDS transmitter.

Note4: Input signals to TC4, TC5 and TD0 to TD6 are not used inside the product, but do not keep TC4, TC5 and TD0 to TD6 open to avoid noise problem.



## PRELIMINARY

NEC NEC LCD Technologies, Ltd.

NL10276BC30-34R

## 4.6 DISPLAY COLORS AND INPUT DATA SIGNALS

This product can display 262,144 colors with 64 gray scales. Also the relation between display colors and input data signals is as following.

| Display colors   |         | Data signal (0: Low level, 1: High level) |     |     |     |     |     |     |     |     |     |     |     |     |     |     |     |     |     |
|------------------|---------|---|-----|-----|-----|-----|-----|-----|-----|-----|-----|-----|-----|-----|-----|-----|-----|-----|-----|
|                  |         | R 5                                       | R 4 | R 3 | R 2 | R 1 | R 0 | G 5 | G 4 | G 3 | G 2 | G 1 | G 0 | B 5 | B 4 | B 3 | B 2 | B 1 | B 0 |
| Basic Colors     | Black   | 0   | 0   | 0   | 0   | 0   | 0   | 0   | 0   | 0   | 0   | 0   | 0   | 0   | 0   | 0   | 0   | 0   | 0   |
|                  | Blue    | 0   | 0   | 0   | 0   | 0   | 0   | 0   | 0   | 0   | 0   | 0   | 0   | 1   | 1   | 1   | 1   | 1   | 1   |
|                  | Red     | 1   | 1   | 1   | 1   | 1   | 1   | 0   | 0   | 0   | 0   | 0   | 0   | 0   | 0   | 0   | 0   | 0   | 0   |
|                  | Magenta | 1   | 1   | 1   | 1   | 1   | 1   | 0   | 0   | 0   | 0   | 0   | 0   | 1   | 1   | 1   | 1   | 1   | 1   |
|                  | Green   | 0   | 0   | 0   | 0   | 0   | 0   | 1   | 1   | 1   | 1   | 1   | 1   | 0   | 0   | 0   | 0   | 0   | 0   |
|                  | Cyan    | 0   | 0   | 0   | 0   | 0   | 0   | 1   | 1   | 1   | 1   | 1   | 1   | 1   | 1   | 1   | 1   | 1   | 1   |
|                  | Yellow  | 1   | 1   | 1   | 1   | 1   | 1   | 1   | 1   | 1   | 1   | 1   | 1   | 0   | 0   | 0   | 0   | 0   | 0   |
|                  | White   | 1   | 1   | 1   | 1   | 1   | 1   | 1   | 1   | 1   | 1   | 1   | 1   | 1   | 1   | 1   | 1   | 1   | 1   |
| Red gray scale   | Black   | 0   | 0   | 0   | 0   | 0   | 0   | 0   | 0   | 0   | 0   | 0   | 0   | 0   | 0   | 0   | 0   | 0   | 0   |
|                  |         | 0   | 0   | 0   | 0   | 0   | 1   | 0   | 0   | 0   | 0   | 0   | 0   | 0   | 0   | 0   | 0   | 0   | 0   |
|                  | dark    | 0   | 0   | 0   | 0   | 1   | 0   | 0   | 0   | 0   | 0   | 0   | 0   | 0   | 0   | 0   | 0   | 0   | 0   |
|                  | ↑       |   |     |     | :   |     |     |     |     | :   |     |     |     |     |     | :   |     |     |     |
|                  | ↓       |   |     |     | :   |     |     |     |     | :   |     |     |     |     |     | :   |     |     |     |
|                  | bright  | 1   | 1   | 1   | 1   | 0   | 1   | 0   | 0   | 0   | 0   | 0   | 0   | 0   | 0   | 0   | 0   | 0   | 0   |
| Green gray scale |         | 1   | 1   | 1   | 1   | 1   | 0   | 0   | 0   | 0   | 0   | 0   | 0   | 0   | 0   | 0   | 0   | 0   | 0   |
|                  | Red     | 1   | 1   | 1   | 1   | 1   | 1   | 0   | 0   | 0   | 0   | 0   | 0   | 0   | 0   | 0   | 0   | 0   | 0   |
|                  | Black   | 0   | 0   | 0   | 0   | 0   | 0   | 0   | 0   | 0   | 0   | 0   | 0   | 0   | 0   | 0   | 0   | 0   | 0   |
|                  |         | 0   | 0   | 0   | 0   | 0   | 0   | 0   | 0   | 0   | 0   | 0   | 1   | 0   | 0   | 0   | 0   | 0   | 0   |
|                  | dark    | 0   | 0   | 0   | 0   | 0   | 0   | 0   | 0   | 0   | 0   | 1   | 0   | 0   | 0   | 0   | 0   | 0   | 0   |
|                  | ↑       |   |     |     | :   |     |     |     |     | :   |     |     |     |     |     | :   |     |     |     |
| Blue gray scale  | ↓       |   |     |     | :   |     |     |     |     | :   |     |     |     |     |     | :   |     |     |     |
|                  | bright  | 0   | 0   | 0   | 0   | 0   | 0   | 1   | 1   | 1   | 1   | 0   | 1   | 0   | 0   | 0   | 0   | 0   | 0   |
|                  |         | 0   | 0   | 0   | 0   | 0   | 0   | 1   | 1   | 1   | 1   | 1   | 0   | 0   | 0   | 0   | 0   | 0   | 0   |
|                  | Green   | 0   | 0   | 0   | 0   | 0   | 0   | 1   | 1   | 1   | 1   | 1   | 1   | 0   | 0   | 0   | 0   | 0   | 0   |
|                  | Black   | 0   | 0   | 0   | 0   | 0   | 0   | 0   | 0   | 0   | 0   | 0   | 0   | 0   | 0   | 0   | 0   | 0   | 0   |
|                  |         | 0   | 0   | 0   | 0   | 0   | 0   | 0   | 0   | 0   | 0   | 0   | 0   | 0   | 0   | 0   | 0   | 0   | 1   |
| Blue gray scale  | dark    | 0   | 0   | 0   | 0   | 0   | 0   | 0   | 0   | 0   | 0   | 0   | 0   | 0   | 0   | 0   | 1   | 0   | 0   |
|                  | ↑       |   |     |     | :   |     |     |     |     | :   |     |     |     |     |     | :   |     |     |     |
|                  | ↓       |   |     |     | :   |     |     |     |     | :   |     |     |     |     |     | :   |     |     |     |
|                  | bright  | 0   | 0   | 0   | 0   | 0   | 0   | 0   | 0   | 0   | 0   | 0   | 0   | 1   | 1   | 1   | 1   | 0   | 1   |
|                  |         | 0   | 0   | 0   | 0   | 0   | 0   | 0   | 0   | 0   | 0   | 0   | 0   | 1   | 1   | 1   | 1   | 1   | 0   |
|                  | Blue    | 0   | 0   | 0   | 0   | 0   | 0   | 0   | 0   | 0   | 0   | 0   | 0   | 1   | 1   | 1   | 1   | 1   | 1   |

## PRELIMINARY

NEC NEC LCD Technologies, Ltd.

NL10276BC30-34R

## 4.7 DISPLAY POSITIONS

The following table is the coordinates per pixel (See "4.8 SCANNING DIRECTIONS").

|            |            |     |            |     |              |              |
|------------|------------|-----|------------|-----|--------------|--------------|
| C (0, 0)   |            |     |            |     |              |              |
| R          | G          | B   |            |     |              |              |
| C( 0, 0)   | C( 1, 0)   | ... | C( X, 0)   | ... | C(1022, 0)   | C(1023, 0)   |
| C( 0, 1)   | C( 1, 1)   | ... | C( X, 1)   | ... | C(1022, 1)   | C(1023, 1)   |
| ⋮          | ⋮          | ⋮   | ⋮          | ⋮   | ⋮            | ⋮            |
| C( 0, Y)   | C( 1, Y)   | ... | C( X, Y)   | ... | C(1022, Y)   | C(1023, Y)   |
| ⋮          | ⋮          | ⋮   | ⋮          | ⋮   | ⋮            | ⋮            |
| C( 0, 766) | C( 1, 766) | ... | C( X, 766) | ... | C(1022, 766) | C(1023, 766) |
| C( 0, 767) | C( 1, 767) | ... | C( X, 767) | ... | C(1022, 767) | C(1023, 767) |

## 4.8 SCANNING DIRECTIONS

The following figures are seen from a front view.

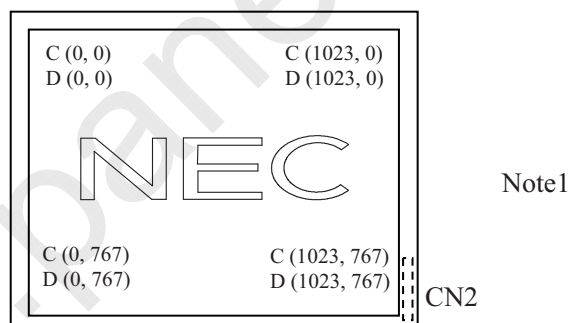


Figure1. Normal scan (DPS: Low or Open)

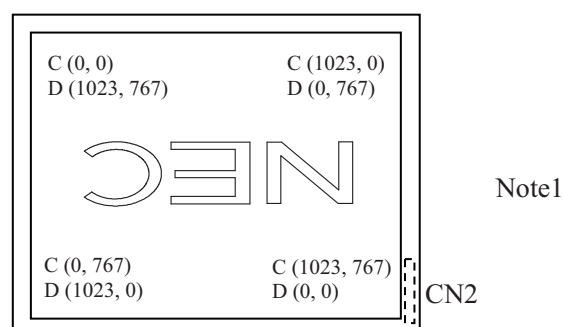


Figure2. Reverse scan (DPS: High)

Note1: Meaning of C (X, Y) and D (X, Y)

C (X, Y): The coordinates of the display position (See "4.7 DISPLAY POSITIONS".)

D (X, Y): The data number of input signal for LCD panel signal processing board



## PRELIMINARY

NEC NEC LCD Technologies, Ltd.

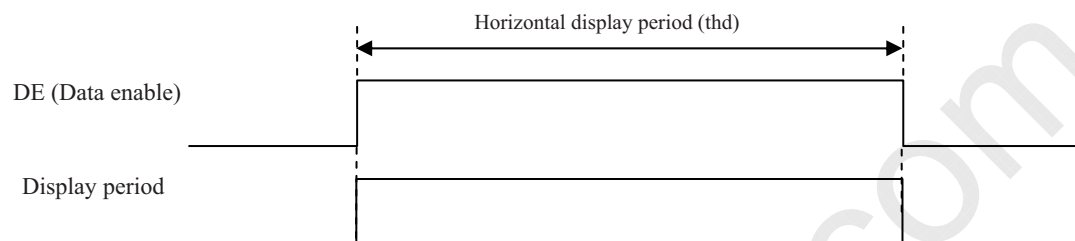
NL10276BC30-34R

## 4.9 INPUT SIGNAL TIMINGS

## 4.9.1 Outline of input signal timings

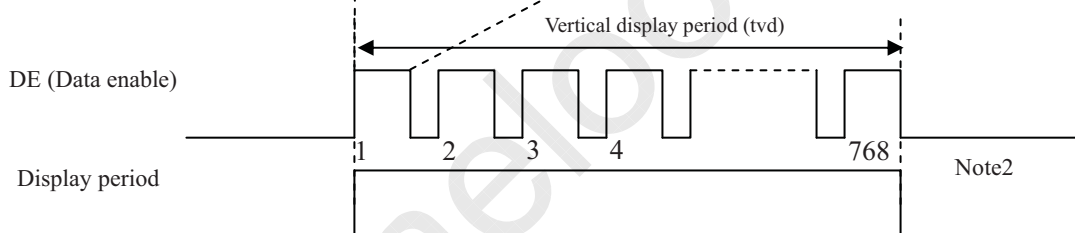
## • Horizontal signal

Note1



## • Vertical signal

Note1



Note1: This diagram indicates virtual signal for set up to timing.

Note2: See "**4.9.3 Input signal timing chart**" for the pulse number.

## PRELIMINARY

NEC NEC LCD Technologies, Ltd.

NL10276BC30-34R

## 4.9.2 Timing characteristics

(Note1, Note2, Note3)

| Parameter |                         |                | Symbol | min.  | typ.   | max.  | Unit | Remarks          |
|-----------|-------------------------|----------------|--------|-------|--------|-------|------|------------------|
| CLK       | Frequency               |                | 1/tc   | 50.0  | 65.0   | 80.0  | MHz  | 15.384ns (typ.)  |
|           | Duty                    |                | -      | -     |        |       | -    | -                |
|           | Rise time, Fall time    |                | -      |       |        |       | ns   |                  |
| DATA      | CLK-DATA                | Setup time     | -      | -     |        |       | ns   | -                |
|           |                         | Hold time      | -      |       |        |       | ns   |                  |
|           | Rise time, Fall time    |                | -      |       |        |       | ns   |                  |
| DE        | Horizontal              | Cycle          | th     | 15.0  | 20.676 | -     | μs   | 48.363kHz (typ.) |
|           |                         |                |        | 1,050 | 1,344  | 1,800 | CLK  |                  |
|           |                         | Display period |        | thd   | 1,024  |       |      | CLK              |
|           | Vertical<br>(One frame) | Cycle          | tv     | 13.1  | 16.666 | 20.0  | ms   | 60.0Hz (typ.)    |
|           |                         |                |        | 770   | 806    | -     | H    |                  |
|           |                         | Display period |        | tvd   | 768    |       |      | H                |
|           | CLK-DE                  | Setup time     | -      | -     |        |       | ns   | -                |
|           |                         | Hold time      | -      |       |        |       | ns   |                  |
|           | Rise time, Fall time    |                | -      |       |        |       | ns   |                  |

Note1: Definition of parameters is as follows.

tc= 1CLK, th= 1H, Vf= 1/tv

Note2: See the data sheet of LVDS transmitter.

Note3: Vertical cycle (tv) should be specified in integral multiple of Horizontal cycle (th).

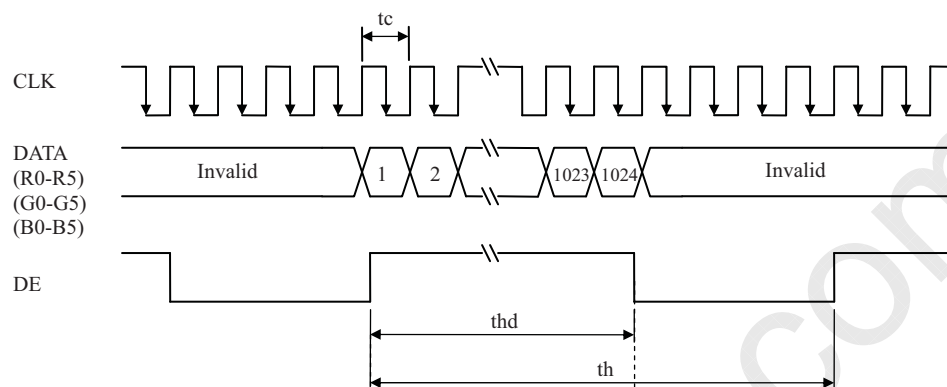
## PRELIMINARY

NEC NEC LCD Technologies, Ltd.

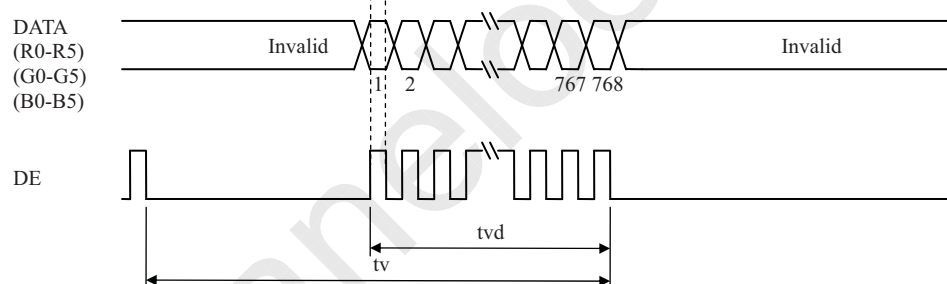
NL10276BC30-34R

## 4.9.3 Input signal timing chart

## Horizontal timing



## Vertical timing



## PRELIMINARY

NEC NEC LCD Technologies, Ltd.

NL10276BC30-34R

## 4.10 OPTICS

## 4.10.1 Optical characteristics

(Note1, Note2)

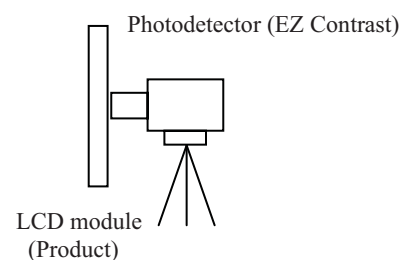
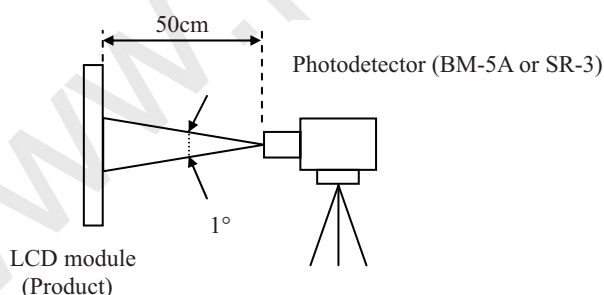
| Parameter            |       | Condition   | Symbol | min.  | typ.  | max.  | Unit              | Measuring instrument | Remarks |
|----------------------|-------|---|--------|-------|-------|-------|-------------------|----------------------|---------|
| Luminance            |       | White at center<br>θR= 0°, θL= 0°, θU= 0°, θD= 0°                     | L      | 290   | 400   | -     | cd/m <sup>2</sup> | SR-3 or BM-5A        | -       |
| Contrast ratio       |       | White/Black at center<br>θR= 0°, θL= 0°, θU= 0°, θD= 0°               | CR     | 350   | 600   | -     | -                 | SR-3 or BM-5A        | Note3   |
| Luminance uniformity |       | White<br>θR= 0°, θL= 0°, θU= 0°, θD= 0°                               | LU     | -     | 1.2   | 1.35  | -                 | BM-5A                | Note4   |
| Chromaticity         | White | x coordinate  | Wx     | 0.263 | 0.313 | 0.363 | -                 | SR-3                 | Note5   |
|                      |       | y coordinate  | Wy     | 0.279 | 0.329 | 0.379 | -                 |                      |         |
|                      | Red   | x coordinate  | Rx     | -     | 0.599 | -     | -                 |                      |         |
|                      |       | y coordinate  | Ry     | -     | 0.354 | -     | -                 |                      |         |
|                      | Green | x coordinate  | Gx     | -     | 0.348 | -     | -                 |                      |         |
|                      |       | y coordinate  | Gy     | -     | 0.579 | -     | -                 |                      |         |
|                      | Blue  | x coordinate  | Bx     | -     | 0.152 | -     | -                 |                      |         |
|                      |       | y coordinate  | By     | -     | 0.107 | -     | -                 |                      |         |
| Color gamut          |       | θR= 0°, θL= 0°, θU= 0°, θD= 0°<br>at center, against NTSC color space | C      | 40    | 50    | -     | %                 |                      |         |
| Response time        |       | White to Black  | Ton    | -     | 3     | 5     | ms                | BM-5A                | Note6   |
|                      |       | Black to White  | Toff   | -     | 15    | 21    | ms                |                      | Note7   |
| Viewing angle        | Right | θU= 0°, θD= 0°, CR≥ 10  | θR     | 70    | 80    | -     | °                 | BM-5A or EZ Contrast | Note8   |
|                      | Left  | θU= 0°, θD= 0°, CR≥ 10  | θL     | 70    | 80    | -     | °                 |                      |         |
|                      | Up    | θR= 0°, θL= 0°, CR≥ 10  | θU     | 70    | 80    | -     | °                 |                      |         |
|                      | Down  | θR= 0°, θL= 0°, CR≥ 10  | θD     | 70    | 80    | -     | °                 |                      |         |

Note1: These are initial characteristics.

Note2: Measurement conditions are as follows.

Ta= 25°C, VCC= 3.3V, IL= 50mA / One circuit, Display mode: XGA, Horizontal cycle= 1/48.363kHz, Vertical cycle= 1/60.0Hz, DPS= Low or Open: Normal scan

Optical characteristics are measured at luminance saturation 20minutes after the product works in the dark room. Also measurement methods are as follows.



Note3: See "4.10.2 Definition of contrast ratio".

Note4: See "4.10.3 Definition of luminance uniformity".

Note5: These coordinates are found on CIE 1931 chromaticity diagram.

Note6: Product surface temperature: TopF= 32 °C

Note7: See "4.10.4 Definition of response times".

Note8: See "4.10.5 Definition of viewing angles".

# PRELIMINARY

**NEC** NEC LCD Technologies, Ltd.

**NL10276BC30-34R**

## 4.10.2 Definition of contrast ratio

The contrast ratio is calculated by using the following formula.

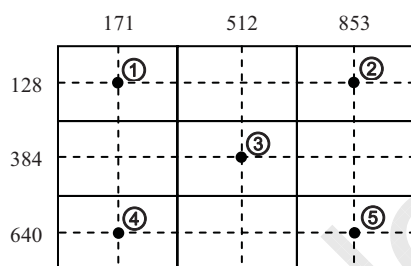
$$\text{Contrast ratio (CR)} = \frac{\text{Luminance of white screen}}{\text{Luminance of black screen}}$$

## 4.10.3 Definition of luminance uniformity

The luminance uniformity is calculated by using following formula.

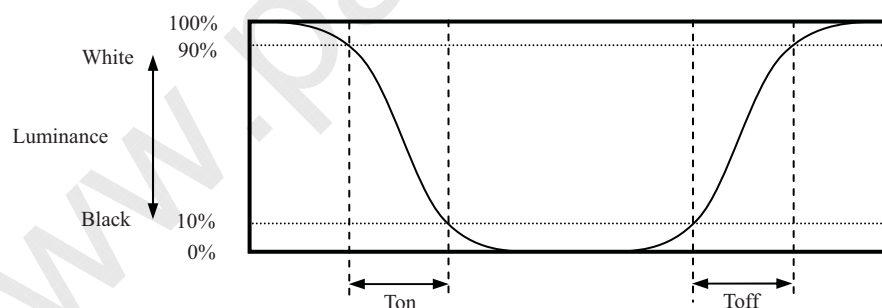
$$\text{Luminance uniformity (LU)} = \frac{\text{Maximum luminance from ① to ⑤}}{\text{Minimum luminance from ① to ⑤}}$$

The luminance is measured at near the 5 points shown below.

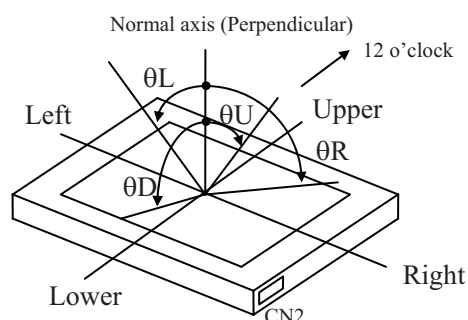


## 4.10.4 Definition of response times

Response time is measured at the time when the luminance changes from "white" to "black", or "black" to "white" on the same screen point, by photo-detector. Ton is the time when the luminance changes from 90% down to 10%. Also Toff is the time when the luminance changes from 10% up to 90% (See the following diagram.).



## 4.10.5 Definition of viewing angles



## PRELIMINARY

NEC NEC LCD Technologies, Ltd.

NL10276BC30-34R

## 5. ESTIMATED LUMINANCE LIFETIME

The luminance lifetime is the time from initial luminance to half-luminance.

**This lifetime is the estimated value, and is not guarantee value.**

| Condition                   |   | Estimated luminance lifetime<br>(Life time expectancy)<br>Note1, Note2, Note3 | Unit |
|-----------------------------|---|---|------|
| LED<br>elementary substance | 25°C (Ambient temperature of the product)<br>Continuous operation, IL= 50mA/One circuit   | 70,000  | h    |
|                             | 70°C (Surface temperature at screen center)<br>Continuous operation, IL= 50mA/One circuit | 60,000  | h    |

Note1: Life time expectancy is mean time to half-luminance.

Note2: Estimated luminance lifetime is not the value for an LCD module but the value for LED elementary substance.

Note3: By ambient temperature, the lifetime changes particularly. Especially, in case the product works under high temperature environment, the lifetime becomes short.

## PRELIMINARY

NEC NEC LCD Technologies, Ltd.

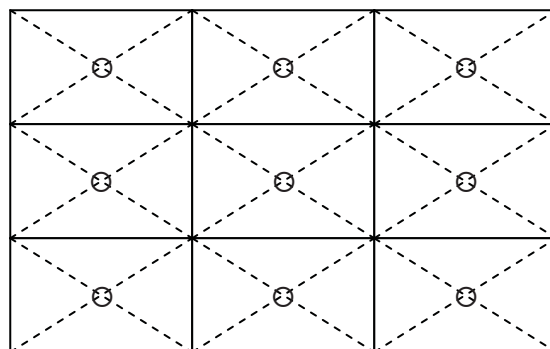
NL10276BC30-34R

## 6. RELIABILITY TESTS

| Test item                                    |               | Condition   | Judgment                                       | Note1 |
|--|---------------|---|--|-------|
| High temperature and humidity<br>(Operation) |               | ① $60 \pm 2^{\circ}\text{C}$ , RH= 90%, 240hours<br>② Display data is black.  | No display malfunctions                        |       |
| High temperature<br>(Operation)              |               | ① $70 \pm 3^{\circ}\text{C}$ , 240hours<br>② Display data is black.   |  |       |
| Heat cycle<br>(Operation)                    |               | ① $-20 \pm 3^{\circ}\text{C}$ ...1hour<br>$70 \pm 3^{\circ}\text{C}$ ...1hour<br>② 50cycles, 4hours/cycle<br>③ Display data is black.                                   |  |       |
| Thermal shock<br>(Non operation)             |               | ① $-20 \pm 3^{\circ}\text{C}$ ...30minutes<br>$80 \pm 3^{\circ}\text{C}$ ...30minutes<br>② 100cycles, 1hour/cycle<br>③ Temperature transition time is within 5 minutes. |  |       |
| ESD<br>(Operation)                           |               | ① 150pF, 150Ω, $\pm 10\text{kV}$<br>② 9 places on a panel surface Note2<br>③ 10 times each places at 1 sec interval   |  |       |
| Dust<br>(Operation)                          |               | ① Sample dust: No. 15 (by JIS-Z8901)<br>② 15 seconds stir<br>③ 8 times repeat at 1 hour interval  | No display malfunctions<br>No physical damages |       |
| Vibration<br>(Non operation)                 |               | ① 5 to 100Hz, $11.76\text{m/s}^2$<br>② 1 minute/cycle<br>③ X, Y, Z directions<br>④ 50 times each directions   |  |       |
| Mechanical shock<br>(Non operation)          |               | ① $294\text{m/s}^2$ , 11ms<br>② $\pm\text{X}$ , $\pm\text{Y}$ , $\pm\text{Z}$ directions<br>③ 3 times each directions   |  |       |
| Low pressure                                 | Operation     | ① 53.3kPa (Equivalent to altitude 4,850m)<br>② $-20^{\circ}\text{C} \pm 3^{\circ}\text{C}$ ...24 hours<br>③ $70^{\circ}\text{C} \pm 3^{\circ}\text{C}$ ...24 hours      | No display malfunctions                        |       |
|  | Non-operation | ① 15kPa (Equivalent to altitude 13,600m)<br>② $-20^{\circ}\text{C} \pm 3^{\circ}\text{C}$ ...24 hours<br>③ $80^{\circ}\text{C} \pm 3^{\circ}\text{C}$ ...24 hours       |  |       |

Note1: Display and appearance are checked under environmental conditions equivalent to the inspection conditions of defect criteria.

Note2: See the following figure for discharge points.



# PRELIMINARY

**NEC** NEC LCD Technologies, Ltd.

**NL10276BC30-34R**

## 7. PRECAUTIONS

### 7.1 MEANING OF CAUTION SIGNS

The following caution signs have very important meaning. **Be sure to read "7.2 CAUTIONS" and "7.3 ATTENTIONS"!**



This sign has the meaning that customer will be injured or the product will sustain damage if the customer practices wrong operations.



This sign has the meaning that a customer will be injured if the customer practices wrong operations.

### 7.2 CAUTIONS



**\* Do not shock and press the LCD panel and the backlight! There is a danger of breaking, because they are made of glass. (Shock: Equal to or no greater than  $294\text{m/s}^2$  and equal to or no greater than 11ms, Pressure: Equal to or no greater than 19.6 N ( $\phi 16\text{mm}$  jig))**

### 7.3 ATTENTIONS



#### 7.3.1 Handling of the product

- ① Take hold of both ends without touching the circuit board when the product (LCD module) is picked up from inner packing box to avoid broken down or misadjustment, because of stress to mounting parts on the circuit board.
- ② When the product is put on the table temporarily, display surface must be placed downward.
- ③ When handling the product, take the measures of electrostatic discharge with such as earth band, ionic shower and so on, because the product may be damaged by electrostatic.
- ④ The torque for product mounting screws must never exceed 0.343N·m. Higher torque might result in distortion of the bezel. And the length of product mounting screws must be  $\leq 2.8\text{mm}$ .
- ⑤ The product must be installed using mounting holes without undue stress such as bends or twist (See outline drawings). And do not add undue stress to any portion (such as bezel flat area). Bends or twist described above and undue stress to any portion may cause display mura.
- ⑥ Do not press or rub on the sensitive product surface. When cleaning the panel surface, wipe it with a soft dry cloth.
- ⑦ Do not push or pull the interface connectors while the product is working.
- ⑧ When handling the product, use of an original protection sheet on the product surface (polarizer) is recommended for protection of product surface. Adhesive type protection sheet may change color or characteristics of the polarizer.
- ⑨ Usually liquid crystals don't leak through the breakage of glasses because of the surface tension of thin layer and the construction of LCD panel. But, if you contact with liquid crystal by any chance, please wash it away with soap and water.



# PRELIMINARY

**NEC** NEC LCD Technologies, Ltd.

**NL10276BC30-34R**

## 7.3.2 Environment

- ① Do not operate or store in high temperature, high humidity, dewdrop atmosphere or corrosive gases. Keep the product in packing box with antistatic pouch in room temperature to avoid dusts and sunlight, when storing the product.
- ② In order to prevent dew condensation occurred by temperature difference, the product packing box must be opened after enough time being left under the environment of an unpacking room. Evaluate the storage time sufficiently because dew condensation is affected by the environmental temperature and humidity. (Recommended leaving time: 6 hours or more with the original packing state after a customer receives the package)
- ③ Do not operate in high magnetic field. Circuit boards may be broken down by it.
- ④ This product is not designed as radiation hardened.

## 7.3.3 Characteristics

**The following items are neither defects nor failures.**

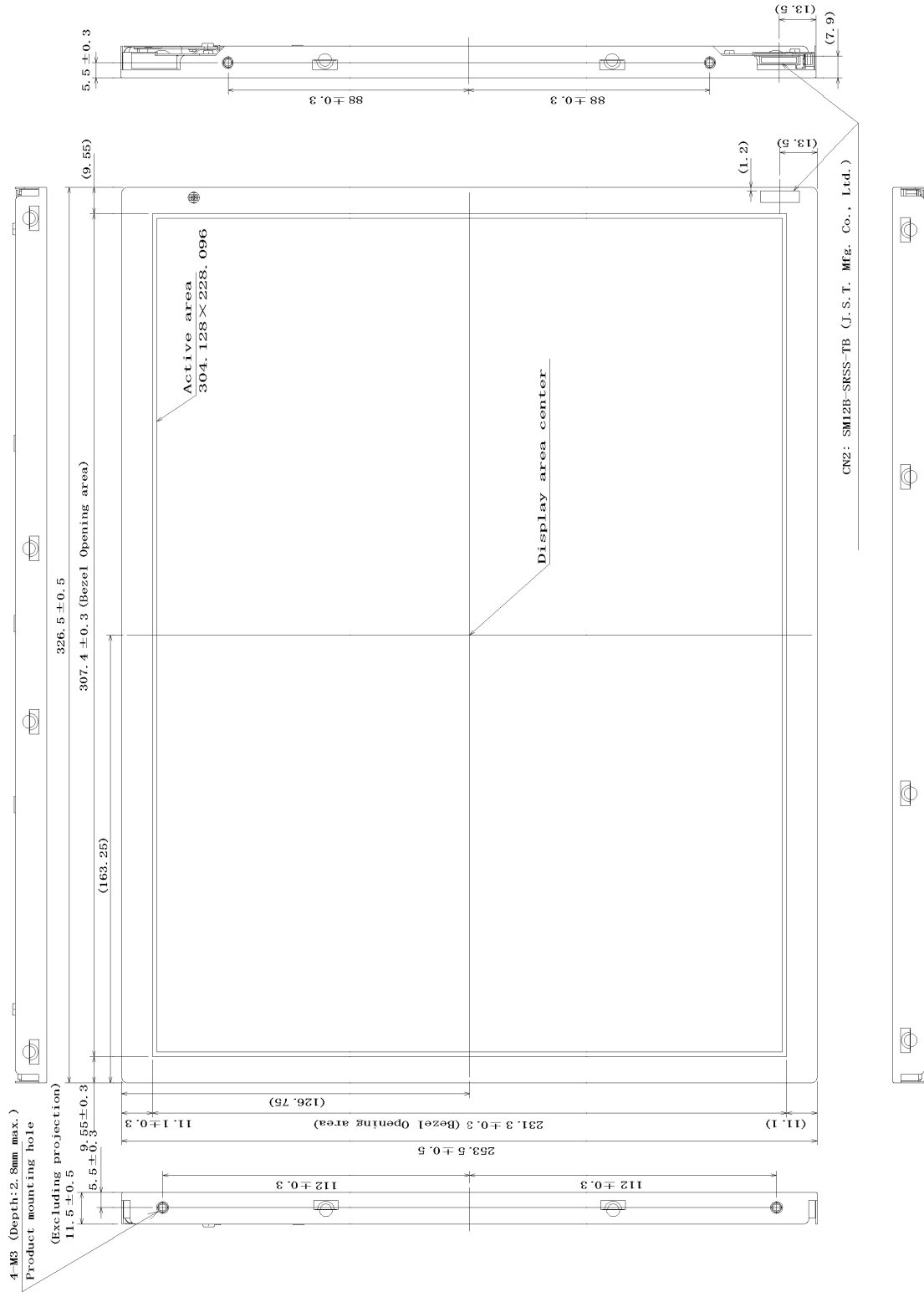
- ① Characteristics of the LCD (such as response time, luminance, color uniformity and so on) may be changed depending on ambient temperature. If the product is stored under condition of low temperature for a long time, it may cause display mura. In this case, the product should be operated after enough time being left under condition of operating temperature.
- ② Display mura, flickering, vertical streams or tiny spots may be observed depending on display patterns.
- ③ Do not display a fixed pattern for a long time because it may cause image sticking. Use a screen saver, if the fixed pattern is displayed on the screen.
- ④ The display color may be changed depending on viewing angle because of the use of condenser sheet in the backlight.
- ⑤ Optical characteristics may be changed depending on input signal timings.

## 7.3.4 Others

- ① All GND and VCC terminals should be used without any non-connected lines.
- ② Do not disassemble a product or adjust variable resistors.
- ③ See "REPLACEMENT MANUAL FOR LAMP HOLDER SET", when replacing lamp holder set.
- ④ Pack the product with the original shipping package, in order to avoid any damages during transportation, when returning the product to NEC for repairing and so on.

8. OUTLINE DRAWINGS

8.1 FRONT VIEW



Note1: The values in parentheses are for reference.

Note2: The torque for product mounting screws must never exceed 0.343N·m. And the length of product mounting screws must be ≤ 2.8mm..

Unit: mm






## PRELIMINARY

NEC NEC LCD Technologies, Ltd.

NL10276BC30-34R

## REVISION HISTORY

*The inside of latest specifications is revised to the clerical error and the major improvement of previous edition. Only a changed part such as functions, characteristic value and so on that may affect a design of customers, are described especially below.*

| Edition     | Document number | Prepared date | Revision contents and signature  |
|-------------|-----------------|---------------|--|
| 1st edition | DOD-PP-1202     | Mar. 31, 2011 | <div><div>Revision contents</div><div>New issue</div><div>Signature of writer</div><div><div>Approved by</div><div></div><div>T. OGAWA</div></div><div><div>Checked by</div><div></div><div></div></div><div><div>Prepared by</div><div></div><div>A. KUMANO</div></div></div> |
|             |                 |               |  |